

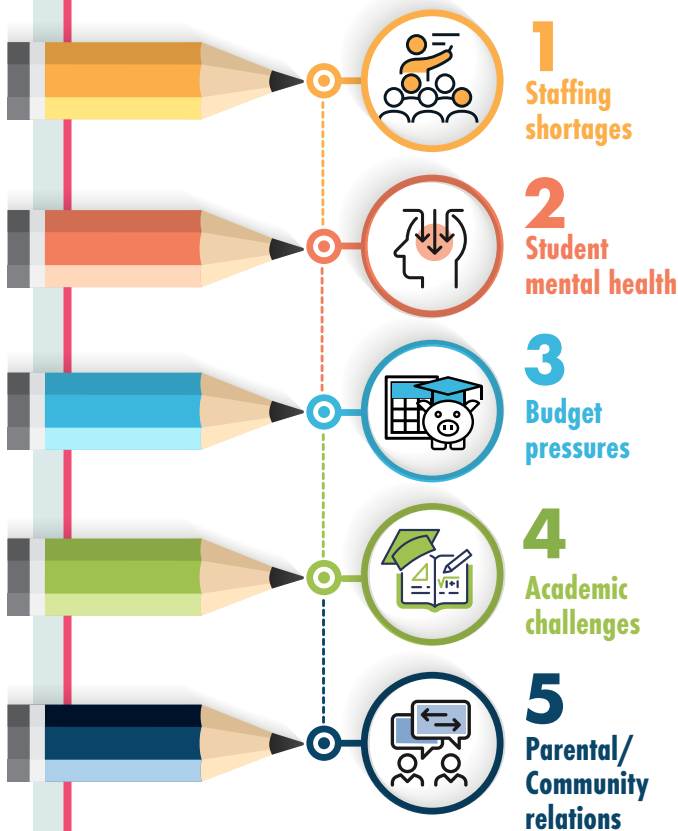
AT A GLANCE

2023 State of Education



The *State of Education* report is intended to be a barometer of not only the key indicators of public school performance, such as standardized test scores and school finances, but also the timely challenges that public schools are facing and how they are coping with them. Data for the report comes from publicly available data sources and surveys of chief school administrators. This year's report also includes results from polling of PA parents with children in a K-12 school.

TOP 5 challenges



Biggest staffing shortage areas

- 1** Substitute teachers
- 2** Instructional aides
- 3** Transportation personnel
- 4** Special education teachers
- 5** Regular education teachers

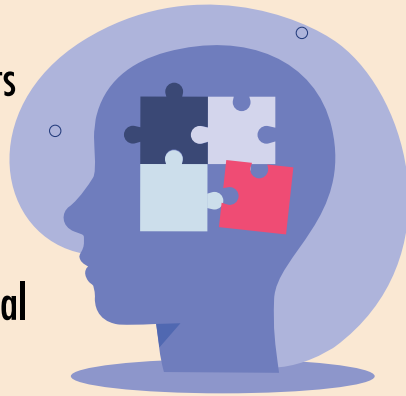
School districts with open teaching positions at the start of the school year

48.5%



Student Mental Health

81%
of superintendents rated student mental health as one of their biggest instructional challenges



School districts are taking a variety of approaches to addressing those issues

- 90%** Partnering with local agencies
- 58%** Contracting with providers
- 36%** Increasing services from intermediate units
- 12%** Sharing services with other schools
- 8%** Hiring additional staff

More than **three-quarters** of parents believe that their children's school has done a good job addressing mental health issues.

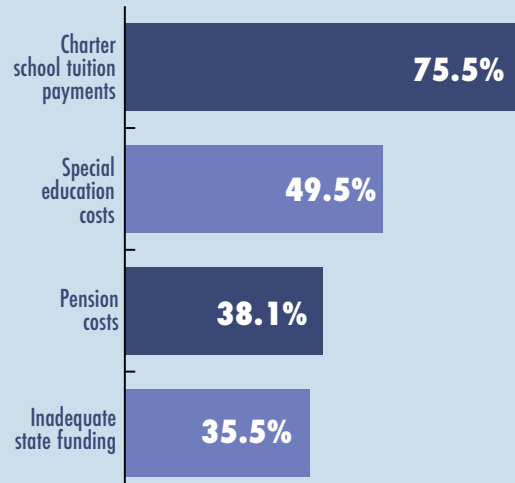


Mandated Expenses

Mandated expenses – those that school districts have very little, if any control over – are the top sources of budget pressure and are driving increases in spending.



TOP BUDGET PRESSURES



In the last decade growth in mandated pension, charter school tuition and special education costs have surpassed state revenues by more than **\$3.7 billion**.

